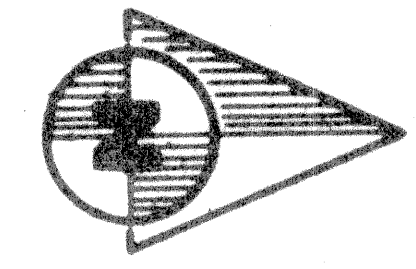


DEER RUN

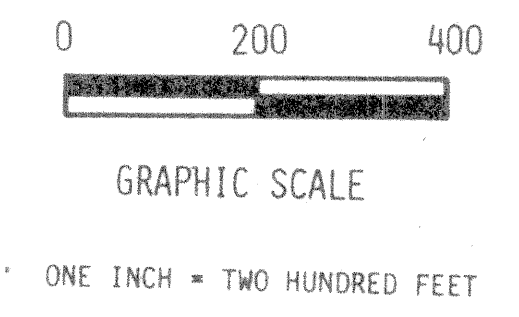
Lying in Sections 21, 22, 23 & 26, Township 43 South, Range 40
East, Palm Beach County, Florida
September, 1977

SHEET 3 OF 6



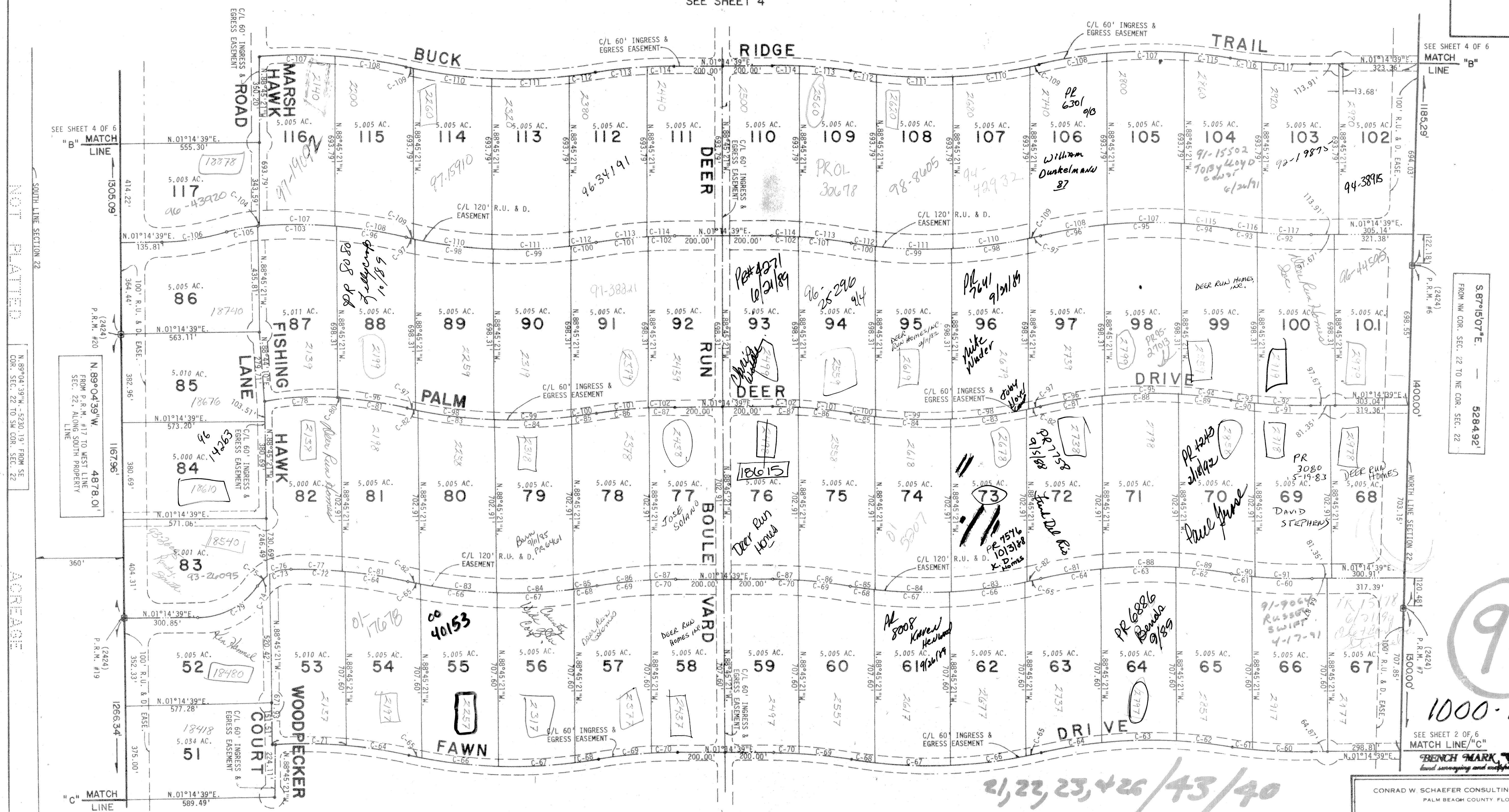
36

STATE OF FLORIDA
COUNTY OF PALM BEACH
THIS PLAT WAS FILED FOR
RECORD AT _____ M.
THIS _____ DAY OF _____
AD, 1977 AND DULY RE-
CORDED IN PLAT BOOK
ON PAGES _____ AND _____
JOHN B. DUNKLE, CLERK
CIRCUIT COURT
BY: _____ DC



SEE SHEET 4

SEE SHEET 4 OF 6



NOT PLATTED

NOT PLATTED

NOT PLATTED

NOT PLATTED

91

1000-104

- NOTES:
1. P.R.M.'s (FLA. CERTIFICATE NO. 2424) ARE DENOTED THUS:
 2. ALL CULDESAC EASEMENTS ARE A DIAMETER OF 100 FEET.
 3. ALL RETURN RADII ALONG EASEMENT LINES FOR INGRESS AND EGRESS EASEMENTS ARE 25 FEET UNLESS OTHERWISE INDICATED.
 4. ALL RETURN RADII WHEN INDICATED ALONG EASEMENT LINES FOR RECREATION, UTILITY AND DRAINAGE EASEMENTS, (R.U. & D. EASE.), ARE 50 FEET UNLESS OTHERWISE SHOWN.
 5. R.U. & D. EASE. DENOTES RECREATION, UTILITY AND DRAINAGE EASEMENT.
 6. C-500 INDICATES A CURVE NUMBER FOR DATA PERTAINING TO SAME, CONSULT CURVE DATA TABLE ON SHEET 6 OF 6.
 7. CENTERED ALONG ALL LOT LINES, OR PORTIONS THEREOF, WHERE NO EASEMENT IS GRAPHICALLY SHOWN IS A 40 FOOT RECREATION, UTILITY AND DRAINAGE EASEMENT (R.U. & D. EASE.). ----- SEE DEDICATION ON SHEET 1 OF 6.

SEE SHEET 2

DEER RUN

21, 22, 23, & 26 / 43 / 40

35/36

CONRAD W. SCHAEFER CONSULTING ENGINEERS, INC.
PALM BEACH COUNTY, FLORIDA

DESIGNED	DRAWN	CHECKED	JOB NO.	DRAWING NO.
CWS	WSK	RJW	77-111	
DATE	SCALE	APPROVED	FILE NO.	SHEET OF
9/13/77	1" = 200'	CWS		3 OF 6

THIS INSTRUMENT WAS PREPARED IN THE OFFICES OF BENCH MARK LAND SURVEYING AND MAPPING, INC., 2300 PALM BEACH LAKES BLVD., SUITE 109, WEST PALM BEACH, FL.